



**faytech**, nice touch.

# YOUR **TOUCH-DEVICE** SPECIALIST

2021 CATALOGUE





## Who we are

With strong Research & Development teams in both Germany and China, faytech has the ability to innovate. We make sure the products we develop are always at the technical forefront.

In addition to the SGS guided ISO 9001:2015 certification of both our production plants in China, faytech's products have certifications which also comply with quality control anywhere on the globe.



# The faytech quality



## OUR EXPERTISE

INDUSTRIAL, ATM/POS, AUTOMATION,  
MEDICAL, MACHINE CONTROL, HOME  
AUTOMATION, DIGITAL SIGNAGE,  
TRANSPORTATION.

- ✓ All products have CE, FCC and RoHS certifications before included in our portfolio.
- ✓ faytech's quality department complies with IATF 16949.
- ✓ Some products also comply with special directives, such as E-Mark and EN 60601-1 Medical certificates.



# History

10+ years production in Shenzhen

faytech has its roots in Germany. Arne Weber, the founding manager of faytech, started to develop and market electronic devices in **2001**.

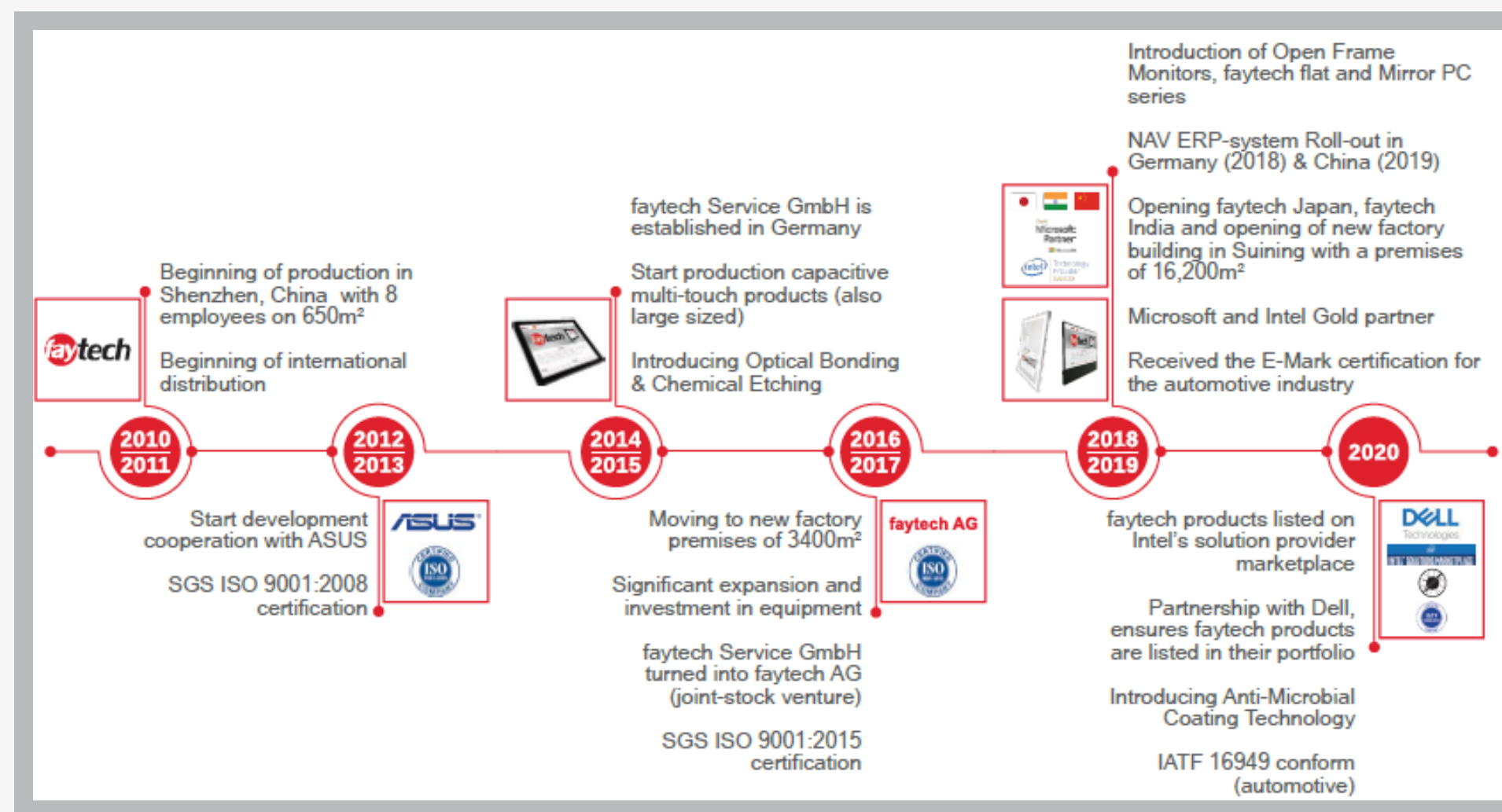
Later in **2006**, the today called faytech AG started to import touch displays in Germany.

Within three years, the German corporation became the leading touch device supplier in Germany in this niche.

In **2009**, the management team moved to Shenzhen to start its own production facility in China and right after, faytech Tech. Co., Ltd. was founded.

In **2010**, faytech began to produce touch PCs in its own factory for the first time. Today all offered touch devices are solely designed and manufactured by faytech AG.

02



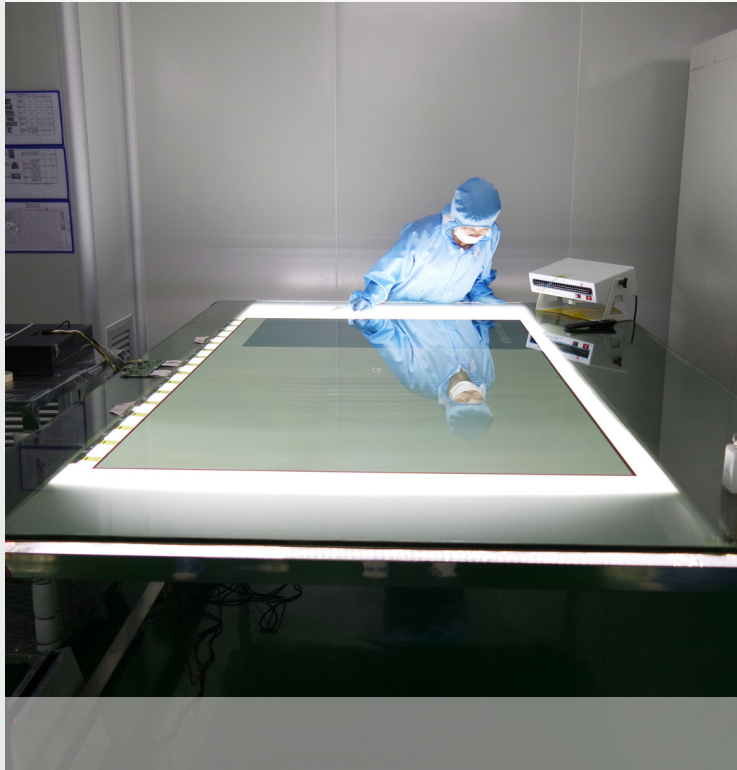


# CORE COMPETENCIES

## TOUCH-TECHNOLOGY

*Capacitive & Resistive Touch technology.*

R&D teams in Germany and China further develop the touch technology to enhance the user-experience.



## OPTICAL BONDING EXPERTISE

*In-house class 100, 1,000 and 10,000 cleanrooms.*

Production of own Optical Bonding formula (CLEAR-BOND) with the best properties available to date.

## CUSTOM-MADE PROJECTS

*Flexibility and adapted solutions.*

Being in control of all value chain allows us to tailor the projects on your needs. All customization options are possible i.e. case design, connectors, coating, CPU or added peripherals.



## RELIABLE QUALITY & PRICING

*Two production plants in China.*

The highest quality material & reasonable pricing for cell design, assembly, backlight design, cover glass production, touch sensor lamination, mainboard design and optical bonding.





# PRODUCTS PORTFOLIO

## 1 TOUCH-MONITORS

Capacitive Touch Monitors, Open Frame Capacitive Touch Monitors and IP65 Touch Monitors with All-In-One Cable.

## 2 TOUCH PC

Capacitive / Embedded Touch PCs and Resistive Touch PC.

## 3 SPECIAL PRODUCTS

Digital Signage & Kiosk Solutions, Hygienic Solutions, Interactive Mirror, Faytech Flat and Easy Shopper.



# 1.TOUCH MONITORS

## CAPACITIVE TOUCH MONITORS

05

Modern sleek look with flat edge to edge glass IP65 water and dust proof front panels. This device has capacitive 10-finger multitouch, glass front reaching MosH 7, the glass surface is anti-glare treated (chemical etching) and a wide variety of connectors.

All the monitors have VESA 75 or VESA 100 screw patterns on the back, while the 13.3" to 21.5" come with their own desktop stand included.

The perfect choice for a wide variety of applications: POS systems, control panels in industrial fields, in kiosk systems, office/residence automation, digital signage or shopping malls, classrooms and hotels.



### ALSO AVAILABLE: RESISTIVE TOUCH MONITORS



Connectors:  
VGA, DVI, HDMI; PC-Audio, USB-Touch

Additional features:  
OSD Menu with lockable front buttons, loudspeaker, stand

Also available in: 8", 10", 10.1", 12.1", 15", 17", 19", 21", 43" and 55"



	7" Touch Monitor	13.3" Touch Monitor	21.5" Touch Monitor	32" Touch Monitor
Case size (mm) L x W x H	195.6 × 137.6 × 38.4	338.2 × 220.7 × 32.3	532.0 × 331.0 × 46.0	768.0 × 475.0 × 73.45
Screen diagonal (Inch/cm)	7/17.78	13.3/33.78	21.5/54.69	31.5/80.01
Display active screen size (cm)	15.42 × 8.59	29.37 × 16.52	47.70 × 26.80	69.84 × 39.29
Mounting	VESA 75	VESA 100	VESA 100	VESA 400 × 300
Net weight (kg)	0.95	1.50	7.30	14.50
Aspect ratio	16:9	16:9	16:9	16:9
Physical resolution	1024×600	1920×1080	1920x1080	1920x1080
Maximal screen resolution	1920×1080	1920×1080	1920x1200	1920x1200
Colors displayed	262K	16.7M	16.7M	16.7M
Brightness (cd/m²)	500	350	250	350
Contrast	700:1	700:1	1000:1	3000:1
Typical reaction time Tr/Tf (ms)	10/15	14/11	1.5/3.5	6/1
Viewing angle horizont./vertic (°)	150/145	178/178	170/160	178/178
Working power (V)	12	12	12	24
Power consumption (W)	7	12	22	75
Operating temperature (°C)	-10 ~ +60	-10 ~ +60	-10 ~ +60	-10 ~ +60
Touch technology	Projected capacitive 10-point multitouch	Projected capacitive 10-point multitouch	Projected capacitive 10-point multitouch	Projected capacitive 10-point multitouch
Touch panel drivers	Windows, Linux, Mac, Android	Windows, Linux, Mac, Android	Windows, Linux, Mac, Android	Windows, Linux, Mac, Android
Touch life (Contacts)	Unlimited	Unlimited	Unlimited	Unlimited
Surface hardness	7H	7H	7H	7H



# 1. TOUCH MONITORS

## OPEN FRAME TOUCH MONITORS

### The perfect choice for industrial and business applications

The capacitive 10-finger multitouch panel brings an easy using experience for a wide range of applications. Each model in this series is built for reliable and extended service by using an A+ quality HD LCD panel with energy efficient LED technology. It is equipped with a wide range of standard connectors, such as HDMI, DVI, VGA, USB-Touch, serial and DC-In.

The perfect interactive solution for digital signage, classrooms, meeting rooms, industrial automation, shopping malls, hotels and many other areas.

Available in: 7", 11.6", 15", 15.6", 21.5", 32", 43" and 55"



FAYTECH AG | CATALOGUE 2021



### Key Features

- 1.1mm cover glass with 7H surface hardness
- Optically bonded Touch Panel to LCD Panel
- Anti-glare surface treatment (chemical etching)
- 10-Finger-Multi Touch Capacitive Touch Panel
- A+ quality LED backlight panels with 100k hours lifetime
- 1000+ cd/m2 brightness
- Integrated audio speakers (2x2w)
- 2 year guarantee

### Solid integration options:

Clamp Supports



Double-sided tape



SF50 glue





# 1.TOUCH MONITORS

## IP65 TOUCH MONITORS WITH ALL-IN-ONE CABLE

IP65 High Brightness Touch Monitors are the perfect solution for industrial and outdoor applications in harsh environments. The IP65 Monitors are available also as Resistive & Capacitive touch versions.

### Key features:

- Comprehensive IP65 protection for applications under harsh circumstances, water and dustproof
- 1000+ cd/m<sup>2</sup> brightness for increased visibility even at extremely bright environmental conditions
- Extended voltage input 8~36V



12.1" IP65 High Brightness Touch Monitor: front, back and connectors.

Available in: 7", 8", 10", 10.4", 12.1" and 15"



FAYTECH AG | CATALOGUE 2021

### ALSO AVAILABLE: IP65 TOUCH PCS FOR HARSH APPLICATIONS.

They include Individually protected IP65 Connectors for any environment!



Available in: 10.4" and 15"

Case size (mm) L x W x H	308.6 x 239.1 x 48.3
Screen diagonal (Inch/cm)	12.1/30.73
Display active screen size (cm)	24.60x18.40
Mounting	VESA 100
Net weight (kg)	1.50
Aspect ratio	4:3
Physical resolution	1024x768
Colors displayed	16.7M
Brightness (cd/m <sup>2</sup> )	1000+
Contrast	700:1
Typical reaction time Tr/Tf (ms)	25/10
Viewing angle horizont./vertic (°)	160/160
Working power (V)	8~36
Power consumption (W)	20
Operating temperature (°C)	-25 ~ +75
Touch technology	Capacitive 10-Point Multitouch
Touch panel drivers	Windows, Linux, Mac, Android
Touch life (Contacts)	Unlimited
Surface hardness	7H



## 2. TOUCH PC

# CAPACITIVE / EMBEDDED TOUCH PC

**The Capacitive PC series stands out with a fanless silent operation, IP65 front panel design, high reliability and fine craftwork.**

Flat edge to edge glass with IP65 water- and dust proof front panels. The perfect choice for a wide variety of business and industrial applications: POS systems, control panels in industrial fields, kiosk systems, office/residence automation, digital signage. Suitable for many areas i.e. shopping malls, classrooms, and hotels. Available in: 7" - 55".



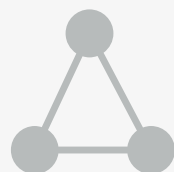
10" Capacitive Touch PC (i5-7300U)

#### Intel® Core™ i5-7300U CPU

- 8GB RAM memory, 128GB Industrial SSD
- Windows 10 or Linux Ubuntu

#### ARM V40 QuadCore CPU

- 1GB RAM memory, 8GB FLASH storage
- Windows 10 or Linux Ubuntu



#### Intel® Pentium® N4200 CPU

- 8GB RAM memory, 128GB Industrial SSD
- Windows 10 or Linux Ubuntu



### Key Features

- 1.1mm cover glass with 7H surface hardness
- Optically bonded Touch Panel to LCD Panel
- Anti-glare surface treatment (chemical etching)
- 10-Finger-Multi Touch Capacitive Touch Panel
- Patented IP65 front with silicon seal
- Integrated W-LAN
- 2 year guarantee

The heart of the Touchscreen PC is either faytech's industrial Apollo Lake, Kaby Lake U or the ARM V40 mainboard:

- Intel® Pentium® N4200 QuadCore processor, 2.50 GHz core speed
- Intel® Core™ i5-7300U DualCore Processor, 2.60 GHz core speed
- Allwinner® V40 Cortex™ A7 QuadCore Processor



# 2.TOUCH PC

## RESISTIVE TOUCH PCS

# 09

**Silent, but robust - perfect for a wide range of applications**

Fanless silent operation and robust aluminum housing with stable VESA 100 fixation bolts. Powered by faytech's industrial Apollo Lake mainboard. Driven by the Intel® Celeron® N3350 DualCore processor with up to 2.40 GHz clock frequency. This version is equipped with 4GByte RAM, 128G SSD and Intel's HD Graphic chipset, supporting Full HD, DirectX 11.1 and OpenGL 4.0.

For a wide variety of applications including POS systems, control panels in industrial fields, in kiosk systems, office/residence automation and digital signag. Suitable for many areas i.e. shopping malls, classrooms and hotels.

Available in: 8", 10", 12.1", 15", 17", 19"



17" Resistive Touch PC (N3350)

### Key Features

- Intel® Celeron® N3350 DualCore CPU
- 4 GB RAM memory, 128GB Industrial SSD
- Supports Windows 10 & Linux Ubuntu
- Anti-glare front with 3H surface hardness
- 5-Wire Resistive touch technology
- High-quality black aluminum housing
- Standard and 3-Pin power connector (screwable)
- Integrated W-LAN
- 2 years guarantee

### Touch PC

- 8" Touch PC
- 10" Touch PC
- 12.1" Touch PC
- 15" Touch PC
- 17" Touch PC
- 19" Touch PC

### Case Size (L× W×H) mm

- 216.0 × 183.0 × 57.0
- 259.0 × 206.0 × 53.5
- 304.0 × 214.0 × 51.0
- 368.0 × 288.0 × 58.4
- 397.0 × 325.0 × 60.9
- 468.0 × 314.0 × 62.9

# 3.SPECIAL PRODUCTS

## DIGITAL SIGNAGE & KIOSK SOLUTIONS

Perfect for applications for Point of Sales (POS), information display or digital signage. Whether you wish to place it next to the brand new car in your store as information display, next to one of your highly promoted cosmetic products or at the entrance of your company building, this is the perfect solution for anyone who requires a slim, easy-to-operate and modern looking kiosk.

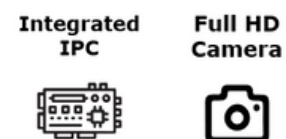
- Easy to operate Straight Out-of-the-Box
- Capacitive Multi-touch
- Ultra Slim Design
- Embedded Solution possible
- Peripherals available



# 10



Optional:



32", 43" and 55" Capacitive Touch Monitor Kiosks

Also available as:

### 43" Customer Stopper

- Rockchip RK3399 inside
- Android OS
- Without touch

### 10.1" Free-Standing Kiosk

- ARM V40 inside
- Android OS
- Capacitive Multi-Touch



# 3.SPECIAL PRODUCTS

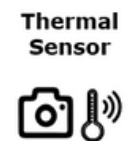
## HYGIENIC SOLUTIONS

The hygienic solutions are perfect for retail areas, restaurants, hospitality and other service industries, as well as government agencies and institutions. The two solutions support in keeping both your organization and clients safe and healthy while allowing for your business to serve its critical functions. The software to operate the Peripherals is included!  
In such an uncertain time, keeping your clients informed, engaged and sanitized has never been more important!

Antibacterial & Antiviral Coating available!



We can provide next-generation touchscreens with 24/7 germ-free protection coating technology from Kastus®! The coated surface permanently blocks >99% of all bacteria and viruses. Proven results against MRSA, E.coli, C. diff. and human Coronavirus.



CLEAR BOND



FAYTECH AG | CATALOGUE 2021

# 11



### 10.1" Thermal Temperature Testing PC

- Intel® Celeron® N3350 or Rockchip RK3399
- Thermal Sensor
- Full HD Camera
- RFID Reader
- VESA Mounting

### 21.5" Digital Signage Sanitization Station

- Intel® Pentium® N4200 or Monitor version
- Thermal Sensor
- Full HD Camera
- Hand Sanitizer
- Wallmount / Stand

# 3.SPECIAL PRODUCTS

## INTERACTIVE MIRROR

# 12

### Sleek Design and Smart Features

faytech's interactive mirrors are the perfect solution for public or private bathrooms, in hotels, shopping malls, airplanes or any other field that requires a smart mirror.

The device is powered by the powerful Embedded V40 mainboard with preinstalled Android system and software to control the whole mirror.

It can be easily connected to your smart device, e.g. smartphone, using Bluetooth 4.0 or WiFi. It can also be used as a standalone android device.



15.6" Interactive Mirror



Interactive Mirror installed in bathroom

### Key Features

- Allwinner® V40 Cortex™ A7 QuadCore
- 1 GB DDR3 RAM & 8 GB EMMC FLASH
- Supports Android up to version 6.0
- Built-in Bluetooth 4.0 & W-LAN
- Optically bonded Touch Panel to LCD Panel
- 10-Finger-Multi Touch Capacitive Touch Panel
- Comprehensive IP65 protection
- Software to operate the interactive mirror





# 3.SPECIAL PRODUCTS

## FAYTECH FLAT

13

### The perfect solution for activities that require an extra screen

This lightweight portable monitor, also known as faytech flat, is the perfect solution for people that require an extra screen while doing their day-to-day activities. Whether you connect it to your mobile phone, tablet or laptop, it is an easy and convenient way to extend (or duplicate) the screen of your smart device over USB Type-C or HDMI cable.

Included with the device is a flexible stand, USB Type-C cable (1m) and protection case.



12.5" faytech flat Touch Monitor



Profile and Back of Faytech Flat

### Key Features

- Full HD (1920 x 1080) LCD Panels
- Perfect touch monitor for people on-the-go
- 10-Finger-Multi Touch Capacitive Touch Panel
- Optically bonded Touch Panel to LCD Panel
- Weight of around 400 grams
- Plug and play ready
- Compatible with Capacitive Touch Pen

# 3.SPECIAL PRODUCTS

## EASY SHOPPER

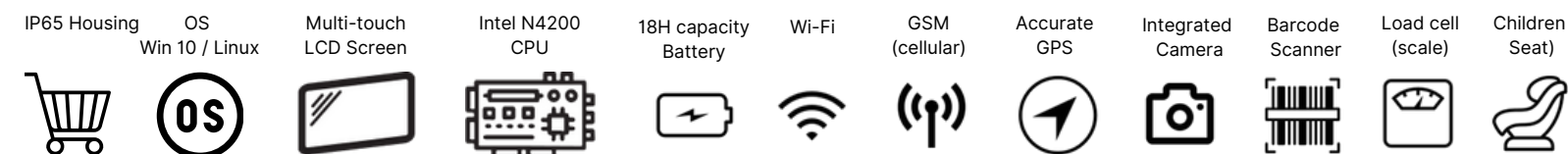
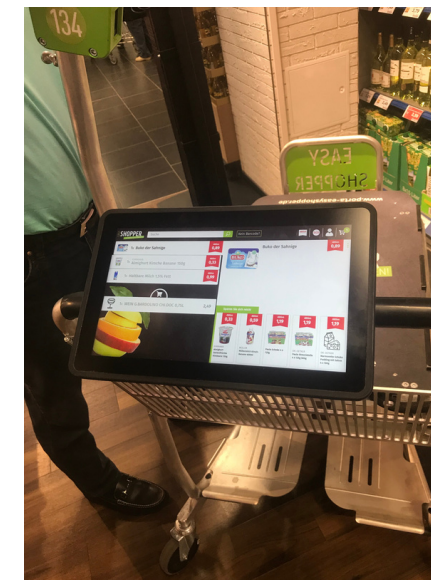
The EASY Shopper is the perfect solution for supermarket automation or any other similar application. It gives customers, store managers and retailers a complete new experience to shopping!

The EASY Shopper is basically the 'All-in-One' tool for any large supermarket wishing to be one step ahead from their competitors.

### Benefits Store Managers

The most innovative in-store shopping solution with sophisticated technology and high user acceptance rate.

- Reduces costs - fewer cashiers, more cashless payments and lower theft rate;
- Effective use of space - more space for promotions and enhancements;
- Customer focus - more time available to dedicate to customer service;
- Better day-to-day business - targeted promotions and improved price management.



### Benefits Clients

The smartest in-store shopping experience which enables customers to control the entire shopping process.

- Saves time - no need to queue or unbag items at cashier;
- Saves money - all special offers and discounts at a glance;
- It is convenient - search and navigate to specific products;
- It is effective - integrated and transferable shopping list.



# Customization / Optical Bonding

High performing technology - customizable

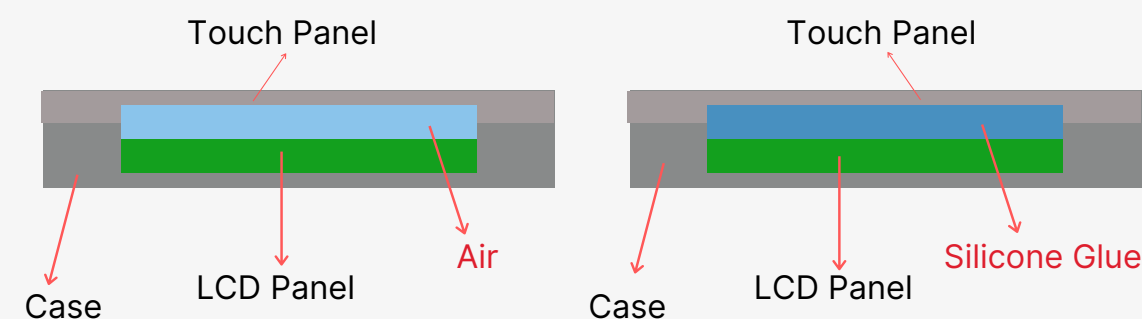
What is Optical Bonding?

Optical bonding is the process of filling up the airgap between the cover glass / touch panel and LCD to improve the visual and material features and with it the quality and value of the bonded device.

Why Optical Bonding?

- It reduces reflections by ca 65%;
- It enhances the perceived LCD brightness by up to 10%;
- No humidity or dust is able to enter between the touch panel and LCD cell;
- Additional resistance towards environmental forces onto the glass.

Air Bonding vs. Optical Bonding



Should you see this logo, you can be sure the device is optically bonded and meets the highest quality standards in the market!



## Customization Options

Due to our broad manufacturing capabilities and experienced engineers, we can custom-design and produce any touch device for your project:

- RFID, fingerprint or laser scanner;
- Integrated camera;
- Customized buttons;
- Customized connectors;
- Different mounting options;
- Anti-Microbial coating options;
- Bluetooth, 3G, 4G and Wi-Fi;
- Pick your own faytech mainboard;
- Other added peripheral possibilities;
- Complete IP65 water- & dustproof.

# Clients

We are happy and grateful for all our collaborations around the world.

16





# Contact

faytech relies on German Engineering standards combined Asian manufacturing at attractive prices. Adding the reliable local service, faytech offers one of the most interesting packages in the touch-device industry.

**faytech North America**  
**North American Headquarters**  
237-239 West 29th Street,  
Ground Floor  
New York, NY 10001  
sales@faytech.us

**faytech AG**  
**Corporate Headquarters**  
Bischhäuser Aue 10  
37213 Witzenhausen  
Germany  
sales@faytech.de

**faytech Tech Co., Ltd.**  
Asian Headquarters  
Floor 2 & 3, Building D., Hongmen  
Tech. Zone, Jihua Rd., Shenzhen,  
China 518129  
sales@faytech.com

**faytech Inc.**  
Sales & Service Office  
6th floor CI building 1-7-11  
Higashinohonbashi, Chuoku,  
Tokyo, Japan  
sales@faytech.jp

**Website:**  
www.faytech.com

**European B2B Webshop:**  
b2b.faytech.de

**YouTube:**  
faytechTouchDevices



## **faytech Private Limited**

Sales & Service Office  
3/16 Shanti Niketan  
New Delhi 110021  
India  
sales@faytech.co.in

## **Deutsche faytech Korea**

Sales & Service Office  
7F, Startup Campus 1 dong,  
Pangyo-ro 289 beon-gil 20,  
Bundang-gu, Seongnam-si,  
Gyeonggi-do, 13488, Republic of Korea  
sales@faytech.kr

## **Technical questions & support**

Worldwide support:  
support@faytech.com (English, German, Chinese)

## **Support hotlines:**

Germany: +49 5542 30374 10 (English, German)  
USA: +1 646 205 3214 (English)  
China: +86 755 89580612 (English, German, Chinese)  
India: +91 11 49707436 (English, Hindi)  
Japan: +81 366 722 920 (English, Chinese, Japanese)  
South-Korea: +82 10 3479 1815 (English, Korean)

Catalogue concept and design: Luiza Maria Maniera