

faytech, nice touch.

**2021-2022
CATALOGUE**

YOUR **TOUCH DEVICE** SPECIALIST

faytech AG

German Engineering
Asian Manufacturing
Local Service



For Applications

Industrial

Automation

Machine Control

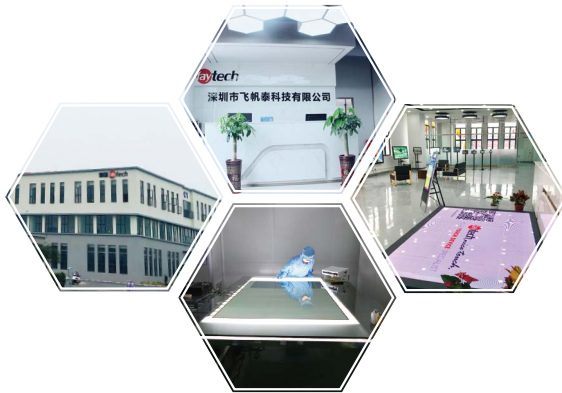
Digital Signage

ATM/POS

Medical

Home Automation

Transportation



faytech's quality

With strong Research & Development teams in both Germany and China, faytech has the ability to develop and innovate new products, which ensures the products provided are always at the technical forefront. In addition to the SGS guided ISO 9001:2015 certification of both our production plants in China, faytech's products have certifications in order to comply with quality control on a global basis.

All of our products receive CE, FCC, CCC and RoHS certifications before being put into our product portfolio. Besides these certification a certain amount of products also comply with special automotive and medical directives, such as the E-Mark, IATF 16949 and EN 60601-1 Medical certificates.

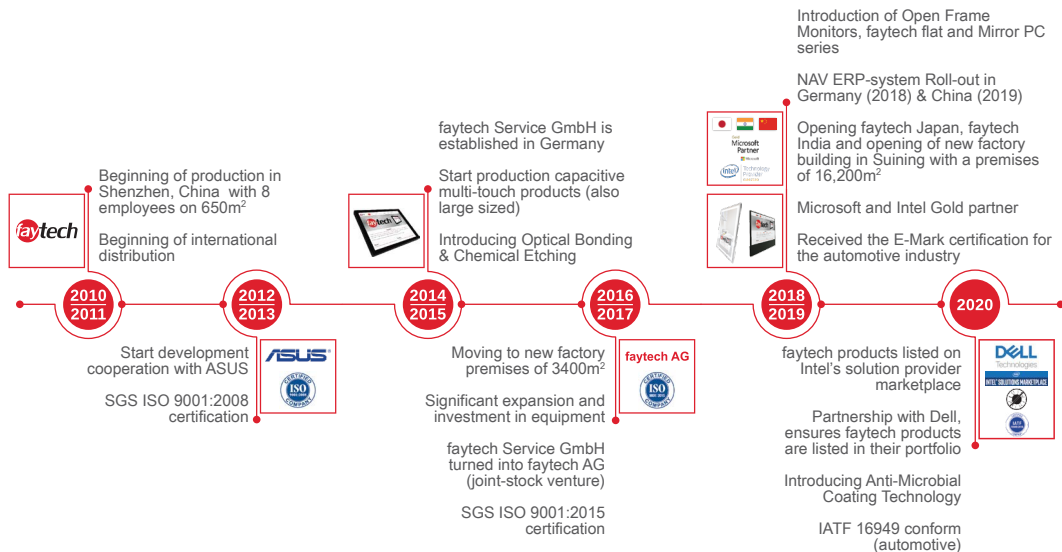
Renowned Customers Worldwide



10⁺ YEARS

PRODUCTION IN SHENZHEN

faytech has its roots in Germany. Arne Weber, the founding manager of faytech, started to develop and market electronic devices in 2001. Later in 2006, the today called faytech AG started to import touch displays in Germany. Within three years, the German corporation became the leading touch device supplier in Germany in this niche. In 2009, the management team moved to Shenzhen to start its own production facility in China and right after, faytech Tech. Co., Ltd. was founded. In 2010, faytech began to produce touch PCs in its own factory for the first time. Today all offered touch devices are solely designed and manufactured by faytech.



faytech's core competencies

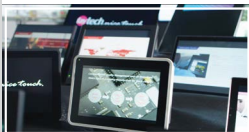


1

Touch Solutions & Technology Specialist



Specialized in **Capacitive** and **Resistive Touch** technology.



R&D teams in Germany and China further **develop** the touch technology to enhance the user-experience.

2

Optical Bonding Expert



In-house optical bonding with class 100, 1,000 and 10,000 cleanrooms



Production of own Optical Bonding formula (**CLEAR-BOND**) with the best properties available to date for this process.



3

Specialist in Custom-Made Projects



faytech is well-known for the **flexibility** in producing custom made projects.



Being in **control of the complete value chain**, any customization is possible with reasonable pricing.



All customization options are possible, such as: **case design**, **connectors**, **coating**, **different CPU** or **added peripherals**.

4

Reliable Quality & Reasonable Pricing



With 2 production plants in China, faytech is able to manufacture and source the **highest quality material** for reasonable pricing.



This includes **cell design**, **assembly**, **backlight design**, **cover glass production**, **touch sensor lamination**, **mainboard design** and **optical bonding**.



Capacitive Touch Monitors

faytech's Capacitive Touch Monitors have a modern sleek look with its flat edge to edge glass IP65 water- and dust proof front panels. This device has capacitive 10-finger multitouch, glass front reaching Mosh 7, the glass surface is anti-glare treated (chemical etching) and a wide variety of connectors. All the monitors have VESA 75 or VESA 100 screw patterns on the back, while the 13.3" to 21.5" come with their own desktop stand included.

These devices are the perfect choice for a wide variety of applications including POS systems, control panels in industrial fields, in kiosk systems, office/residence automation, digital signage and in areas like shopping malls, classrooms, hotels and many more.



*Also available in: 8", 10", 10.1", 12.1", 15", 17", 19", 27", 43" and 55"

7" Touch Monitor

Case size (mm) L x W x H	195.6 x 137.6 x 38.4
Screen diagonal (Inch/cm)	7/17.78
Display active screen size (cm)	15.42 x 8.59
Mounting	VESA 75
Net weight (kg)	0.95
Aspect ratio	16:9
Physical resolution	1024x600
Maximal screen resolution	1920x1080
Colors displayed	262K
Brightness (cd/m ²)	500
Contrast	700:1
Typical reaction time Tr/Tf (ms)	10/15
Viewing angle horizontal/vertical (°)	150/145
Working power (V)	12
Power consumption (W)	7
Operating temperature (°C)	-10 ~ +60
Touch technology	Projected capacitive 10-point multitouch
Touch panel drivers	Windows, Linux, Mac, Android
Touch life (Contacts)	Unlimited
Surface hardness	7H

13.3" Touch Monitor

338.2 x 220.7 x 32.3
13.3/33.78
29.37 x 16.52
VESA 100
1.50
16:9
1920x1080
1920x1080
16.7M
350
700:1
14/11
178/178
12
12
-10 ~ +60
Projected capacitive 10-point multitouch
Windows, Linux, Mac, Android
Unlimited
7H

21.5" Touch Monitor

532.0 x 331.0 x 46.0
21.5/54.69
47.70 x 26.80
VESA 100
7.30
16:9
1920x1080
1920x1200
16.7M
350
1000:1
1.5/3.5
170/160
12
22
-10 ~ +60
Projected capacitive 10-point multitouch
Windows, Linux, Mac, Android
Unlimited
7H

32" Touch Monitor

768.0 x 475.0 x 73.45
31.5/80.01
69.84 x 39.29
VESA 400 x 300
14.60
16:9
1920x1080
1920x1200
16.7M
350
3000:1
6/1
178/178
24
75
-10 ~ +60
Projected capacitive 10-point multitouch
Windows, Linux, Mac, Android
Unlimited
7H

Connectors:

VGA, DVI, HDMI; PC-Audio, USB-Touch

Additional features:

OSD Menu with lockable front buttons, loudspeaker, stand



Resistive Touch Monitors Available too!



Open Frame Touch monitors

faytech's Open Frame Capacitive Touch Monitors are the perfect choice for industrial and business applications. The capacitive 10-finger multitouch panel brings an easy using experience for a wide range of applications. Each model in this series is built for reliable and extended service by using an A+ quality HD LCD panel with energy efficient LED technology. It is equipped with a wide range of standard connectors, such as HDMI, DVI, VGA, USB-Touch, serial and DC-In.

It is the perfect interactive solution for digital signage, classrooms, meeting rooms, industrial automation, shopping malls, hotels and many other areas.

Key features:

- 1.1mm cover glass with 7H surface hardness
- Optically bonded Touch Panel to LCD Panel
- Anti-glare surface treatment (chemical etching)
- 10-Finger-Multi Touch Capacitive Touch Panel
- A+ quality LED backlight panels with 100k hours lifetime
- 1000+ cd/m² brightness
- Integrated audio speakers (2x2w)
- 2 year guarantee



Solid integration options:



Clamp Supports



Double-sided Tape



SF50 Glue

*Available in: 7", 11.6", 15", 15.6", 21.5", 32", 43" and 55"

15" Open Frame Touch Monitor



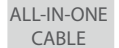
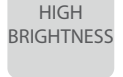
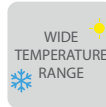
IP65 Touch Monitors with All-In-One Cable

For industrial and outdoor applications in harsh environments, faytech provides IP65 High Brightness Touch Monitors, which are the perfect solution for such applications. These IP65 Monitors are available in Resistive & Capacitive touch versions.

12.1" Capacitive IP65 High Brightness Touch Monitor



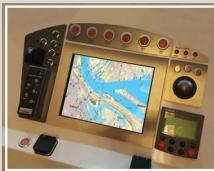
Case size (mm) L × W × H	308.6 × 239.1 × 48.3
Screen diagonal (Inch/cm)	12.1/30.73
Display active screen size (cm)	24.60×18.40
Mounting	VESA 100
Net weight (kg)	1.50
Aspect ratio	4:3
Physical resolution	1024×768
Colors displayed	16.7M
Brightness (cd/m²)	1000+
Contrast	700:1
Typical reaction time Tr/Tf (ms)	25/10
Viewing angle horizont./vertic (°)	160/160
Working power (W)	8~36
Power consumption (W)	20
Operating temperature (°C)	-25 ~ +75
Touch technology	Capacitive 10-Point Multitouch
Touch panel drivers	Windows, Linux, Mac, Android
Touch life (Contacts)	Unlimited
Surface hardness	7H



*Also available in: 7", 8", 10", 10.4" and 15"

Key features:

- Comprehensive IP65 protection for applications under harsh circumstances, including water- and dustproof
- 1000+ cd/m² brightness for increased visibility even at extremely bright environmental conditions
- Extended voltage input 8~36V



IP65 Touch PCs

faytech also provides IP65 Touch PCs for harsh applications. These devices include Individually protected IP65 Connectors to be used in any environment!



15" Capacitive IP65 HB Touch PC

*Also available in: 10.4"



Capacitive / Embedded Touch PCs

faytech's Capacitive PC series stands out among competition with its fanless silent operation, IP65 front panel design, high reliability and fine craftwork. It is the perfect choice for industrial and business application. It has flat edge to edge glass with IP65 water- and dust proof front panels. The heart of the Touchscreen PC is either faytech's industrial Apollo Lake, Kaby Lake U or the ARM V40 mainboard:

- Intel® Pentium® N4200 QuadCore processor, 2.50 GHz core speed
- Intel® Core™ i5-7300U DualCore Processor, 2.60 GHz core speed
- Allwinner® V40 Cortex™ A7 QuadCore Processor

It is the perfect choice for a wide variety of applications including POS systems, control panels in industrial fields, in kiosk systems, office/residence automation, digital signage and in areas like shopping malls, classrooms, hotels and many more.



Key features:

- 1.1mm cover glass with 7H surface hardness
- Optically bonded Touch Panel to LCD Panel
- Anti-glare surface treatment (chemical etching)
- 10-Finger-Multi Touch Capacitive Touch Panel
- Patented IP65 front with silicon seal
- Integrated W-LAN
- 2 year guarantee

Intel® Core™ i5-7300U CPU
8GB RAM memory, 128GB Industrial SSD
Windows 10 or Linux Ubuntu

Intel® Pentium® N4200 CPU
8GB RAM memory, 128GB Industrial SSD
Windows 10 or Linux Ubuntu

ARM V40 QuadCore CPU
1GB RAM memory, 8GB FLASH storage
Windows 10 or Linux Ubuntu

10" Capacitive Touch PC (i5-7300U)

Also Available in:
Intel® Core™ i3-7100U CPU
Intel® Core™ i7-7600U CPU

*Available in: 7" - 55"



Resistive Touch PCs

Case Size (L × W × H) mm

8" Touch PC	216.0 × 183.0 × 57.0	15" Touch PC	368.0 × 288.0 × 58.4
10" Touch PC	259.0 × 206.0 × 53.5	17" Touch PC	397.0 × 325.0 × 60.9
12.1" Touch PC	304.0 × 214.0 × 51.0	19" Touch PC	468.0 × 314.0 × 62.9



Key features:

- Intel® Celeron® N3350 DualCore CPU
- 4GB RAM memory, 128GB Industrial SSD
- Supports Windows 10 & Linux Ubuntu
- Anti-glare front with 3H surface hardness
- 5-Wire Resistive touch technology
- High-quality black aluminum housing
- Standard and 3-Pin power connector (screwable)
- Integrated W-LAN
- 2 years guarantee



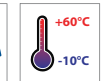
17" Resistive Touch PC (N3350)

Resistive Touch PCs

faytech's Resistive Touch PC series stands out among competition with its fanless silent operation and robust aluminum housing with stable VESA 100 fixation bolts. The touch PC is powered by faytech's industrial Apollo Lake mainboard. It is driven by the Intel® Celeron® N3350 DualCore processor with up to 2.40 GHz clock frequency.

This version is equipped with 4GByte RAM, 128G SSD and Intel's HD Graphic chipset, supporting Full HD, DirectX 11.1 and OpenGL 4.0.

These faytech PCs are the perfect choice for a wide variety of applications including POS systems, control panels in industrial fields, in kiosk systems, office/residence automation, digital signage and in areas like shopping malls, classrooms, hotels and many more.



Digital Signage & Kiosk Solutions

faytech's kiosks are the perfect solution for any occasion in the field of **Point of sales (POS)**, **information display** or **digital signage**. Whether you wish to place it next to the brand new car in your store as information display, next to one of your highly promoted cosmetic products or at the entrance of your company building, this is the perfect solution for anyone who requires a **slim, easy-to-operate** and **modern looking kiosk**!

Easy to operate
Straight
out-of-the-box

Capacitive
Multi-touch

Ultra Slim
Design

Embedded
Solution
Possible

Peripherals
available

32", 43" and 55" Capacitive Touch Monitor Kiosks

Also available as:

10.1" free-standing kiosk

- ARM V40 inside
- Android OS
- Capacitive Multi-Touch

43" Customer stopper

- Rockchip RK3399 inside
- Android OS
- Without touch



Optional



Hygienic Solutions

These hygienic solutions are the perfect solution for the **retail**, **restaurant**, **hospitality** and **other service industries**, as well as **government agencies** and **institutions**. The two solutions support in keeping your organization, customers and guests **safe and healthy** while still allowing for your business to serve its critical functions.

In such an uncertain time, keeping your guests **informed**, **engaged** and **sanitized** has never been more important!

10.1" Thermal Temperature Testing PC

• Intel® Celeron® N3350 or Rockchip RK3399



Thermal Sensor •
Full HD Camera •
Hand Sanitizer •
Wallmount / Stand •

- Thermal Sensor
- Full HD Camera
- RFID Reader
- VESA Mounting



21.5" Digital Signage Sanitization Station

Intel® Pentium® N4200 or Monitor version •

Antibacterial & Antiviral Coating Option available!

faytech can provide next-generation touchscreens with 24/7 germ-free protection coating technology from Kastus®! The coated surface permanently blocks >99% of all bacteria and viruses. Proven results against MRSA, E.coli, C. diff. and human Coronavirus.



Software to operate
the Peripherals is included!



Interactive Mirror

faytech's interactive mirrors are the perfect solution for public or **private bathrooms**, in **hotels**, **shopping malls**, **airplanes** or any other field that requires a smart mirror! The device is powered by the powerful Embedded V40 mainboard with pre-installed Android system and software to control the complete mirror.

It can be easily connected to your smart device, e.g. smartphone, using bluetooth 4.0 or WiFi. Of course it can also be used as a standalone android device.



Key features:

- Allwinner® V40 Cortex™ A7 QuadCore
- 1 GB DDR3 RAM & 8 GB EMMC FLASH
- Supports Android up to version 6.0
- Built-in Bluetooth 4.0 & W-LAN
- Optically bonded Touch Panel to LCD Panel
- 10-Finger-Multi Touch Capacitive Touch Panel
- Comprehensive IP65 protection
- Software to operate the interactive mirror

15.6" Interactive Mirror

Key features:

- Full HD (1920 x 1080) LCD Panels
- Perfect touch monitor for people on-the-go
- 10-Finger-Multi Touch Capacitive Touch Panel
- Optically bonded Touch Panel to LCD Panel
- Weight of around 400 grams
- Plug and play ready



Compatible with
Capacitive Touch Pen



12.5" faytech flat Touch Monitor

faytech flat

This **lightweight portable monitor**, also known as the faytech flat, is the perfect solution for people that require an extra screen while doing their day-to-day activities. Whether you connect it to your **mobile phone**, tablet or laptop, it will be an easy and convenient way of extending (or duplicating) the screen of your smart device over **USB Type-C** or **HDMI cable**.

Included with the device is a **flexible stand**, **USB Type-C cable (1m)** and **protection case**.



EASY Shopper

The **EASY Shopper** is the perfect solution for **supermarket automation** or any other similar application, it gives customers, store managers and retailers a complete new experience to shopping! **The EASY Shopper** is basically the 'All-in-One' tool for any large supermarket wishing to be one step ahead from their competitors.



Benefits for Customers

It is the smartest in-store shopping experience which enables customers to manage the entire shopping process!



Save Time

- No need to queue or unbag items at cashier!



It is Convenient

- Search and navigate to specific products.



Save Money

- All special offers and discounts at a glance.



It is Effective

- Integrated and transferrable shopping list.



Benefits for Store Managers

It is the most innovative in-store shopping solution with sophisticated technology and high user acceptance rate.

Reduce costs

- Fewer cashiers, more cashless payments and lower theft rate.



Customer Focus

- More time available to dedicate to customer service.



Effective use of Space

- More space for promotions and enhancements.



Better day-to-day business

- Targeted promotions and improved price management.



IP65 Housing



OS Win 10 / Linux



Multi-touch LCD Screen



Intel N4200 CPU



18H capacity Battery



Wi-Fi



GSM (cellular)



Accurate GPS



Integrated camera



Barcode scanner



Load cell (scale)



Children seat

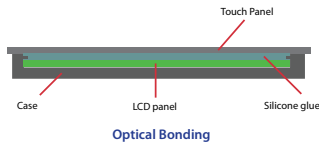
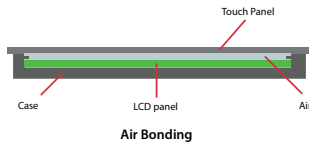


What is Optical Bonding?

Optical bonding is the process of filling up the airgap between the cover glass / touch panel and LCD cell / module to improve the visual and material features and with that the quality and value of the bonded device.

Why Optical Bonding?

- Optical bonding **reduces reflections** by about **65%**
- It **enhances the perceived LCD brightness** by up to **10%**
- **No humidity or dust** is able to enter between the touch panel and LCD cell
- Additional **resistance towards environmental forces** onto the glass



**CLEAR
BOND**

Should you see this logo, you can be sure the device is optically bonded and meets the highest quality standards in the market!

Customization Options

We can **custom design and produce any touch device** for your project. We do this by utilizing our **broad manufacturing capabilities**, **experienced engineers** and **extensive portfolio of completed projects**.

- **RFID-, fingerprint- or laser scanner**
- **Integrated camera**
- **Customized buttons**
- **Customized connectors**
- **Different mounting options**
- **Anti-Microbial coating options**
- **Bluetooth, 3G, 4G and Wi-Fi**
- **Pick your own faytech mainboard**
- **Other added peripheral possibilities**
- **Complete IP65 water- & dustproof**



© 2014 Pearson Education, Inc. or its affiliate(s). All rights reserved. Pearson Education, Inc., 501 Boylston Street, Boston, MA 02116

faytech

Relies on German Engineering standards and combines that with attractively priced Asian Manufacturing. In combination with reliable Local Service, faytech offers one of the most interesting packages in the touch device industry.

faytech AG

Corporate Headquarters

Bischhäuser Aue 10
37213 Witzenhausen
Germany

sales@faytech.de

faytech Tech Co., Ltd.

Asian Headquarters

Floor 2 & 3, Building D., Hongmen
Tech. Zone, Jihua Rd., Shenzhen,
China 518129

sales@faytech.com

faytech North America

North American Headquarters

237-239 West 29th Street,
Ground Floor
New York, NY 10001

sales@faytech.us

faytech Inc.

Sales & Service Office

6th floor CI building 1-7-11
Higashinihonbashi, Chuoku,
Tokyo, Japan

sales@faytech.jp

faytech Private Limited

Sales & Service Office

3/16 Shanti Niketan
New Delhi 110021
India

sales@faytech.co.in

Deutsche faytech Korea Co., Ltd.

Sales & Service Office

7F, Startup Campus 1 dong, Pangyo-ro
289 beon-gil 20, Bundang-gu,
Seongnam-si, Gyeonggi-do, 13488,
Republic of Korea

sales@faytech.kr

For technical questions & support please contact:

Worldwide support:

support@faytech.com (English, German, Chinese)

Support hotlines:

Germany: +49 5542 30374 10 (English, German)

USA: +1 646 205 3214 (English)

China: +86 755 89580612 (English, German, Chinese)

India: +91 11 49707436 (English, Hindi)

Japan: +81 366 722 920 (English, Chinese, Japanese)

South-Korea: +82 10 3479 1815 (English, Korean)

Website:

www.faytech.com

European B2B Webshop:

b2b.faytech.de

YouTube:

[faytechTouchDevices](https://www.youtube.com/faytechTouchDevices)



© faytech 2021-2022