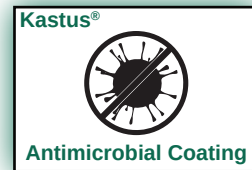


10.1" Industrial Tablet IP65 N4200

FT101N4200ITCAPOB



- Intel® Pentium® N4200 QuadCore CPU
- 6GB RAM memory, 128GB eMMC storage
- Pre-installed Windows 10 OS (with license) (v3)
- Rechargeable lithium battery, 7.4V/7000mAh (8.6+ hours operation) (v2) (v3)
- Kastus® 24/7 anti-viral & anti-bacterial coating
- Anti-glare surface treatment (chemical etching)
- 1000 cd/m² brightness (suitable for outdoor use) (v2) (v3)
- 10-Finger-multi touch capacitive touch panel
- 1.8mm cover glass with 7H surface hardness (IK08) (v2) (v3)
- Optically bonded touch panel to LCD panel
- Complete IP65 water- and dust proof
- Integrated W-LAN & Bluetooth 5.2
- Built-in front & back camera and microphone
- Integrated barcode scanner & fingerprint scanner
- 2 year guarantee (24/7 usage)



faytech's industrial (ruggedized) tablet is the perfect touch solution to be used as a hand-held device (or mounted pc) while performing tasks on the industrial floor or in rough environments. It is completely IP65 water- and dust proof (with all covers closed), has a 10-finger capacitive multi touch panel and 24/7 anti-viral & anti-bacterial coating by Kastus®, with a kill rate of >99% against surface bacteria, traditional viruses, and human coronavirus (3-in-1 protection).

The rechargeable lithium battery will easily get you through your workday when needed, especially in an indoor or semi-indoor environment such as a factory floor or office. The battery lifetime depends on the brightness and active usage (it can last up to 8.6 hours of operation, without any stand-by mode).

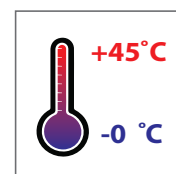
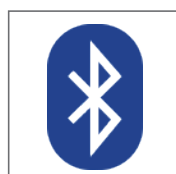
The tablet has an optically bonded touch panel, which will improve the stability, reduce the reflection, increase the viewing angle, and enhance the perceived brightness. It also provides resistance to dust particles and shows a better image in general.

The device is powered by faytech's industrial Apollo Lake mainboard. It is driven by the powerful Intel® Pentium® N4200 QuadCore processor with up to 2.50 GHz clock frequency. It is equipped with 6GB RAM and 128G eMMC storage.

Due to its robust design, the tablet is particularly suitable for use in harsh environments such as industrial, rough and outdoor areas. Besides the mobile solution, the device can also be used as a permanently installed control panel. Windows 10 is pre-installed on the device with activated license.



| Legend / Notes | |
|----------------------------|------|
| Applicable to version 1 | (v1) |
| Applicable to version 2 | (v2) |
| Applicable to version 3 | (v3) |
| Applicable to all Versions | None |



| | | | | | | | |
|----------------------------------|-----------------------|----------------------|---------|---|-----------------------|----------------------|---------|
| Product name | | | | 10.1" Industrial Tablet IP65 N4200 | | | |
| Model number / EAN number | | | | FT101N4200ITCAPOB / 6920734000388 | | | |
| Global Article Code | European Article Code | Release date (D/M/Y) | Version | Global Article Code | European Article Code | Release date (D/M/Y) | Version |
| 3030508833 | 1010502264 | 01/09/2021 | v1 | | | | |
| 3030511187 | 1010502433 | 01/05/2022 | v2 | | | | |
| 3030513606 | 4010077308 | 01/07/2023 | v3 | | | | |

| | |
|------------------|--|
| IP Rating | |
| IP65 | |

| | |
|--|--------------------------------------|
| LCD Panel | |
| Screen diagonal (Inch/cm) | 10.1/25.65 |
| Display active screen size (cm) | 21.70×13.60 |
| Aspect ratio | 16:10 |
| Physical resolution | 1920×1200 |
| External Maximum showable resolution - Micro HDMI | 1920×1200 |
| Colours displayed | 16.7M |
| Brightness (cd/m²) - after incl. touch panel & optical bonding | 1000 ^(v2) ^(v3) |
| Contrast | 800:1 |
| Typical reaction time Tr / Tf (ms) | 25 / 25 |
| Visual Angle horizontal / vertical (°) | 178 / 178 |
| Backlight / Backlight Lifetime (hours) | LED / 50,000 |

| | |
|-------------------------------|--|
| Operation / Mechanical | |
| Operating Temperature (°C) | 0 ~ +45 |
| Humidity Range (RH) | 10% - 90% |
| Net weight (kg) | 1.20 |
| Gross weight (kg) | 1.70 (incl. cartontage) |
| Housing material | Plastic Case, Silicone Rubber Frame |
| Housing (mm) L × W × H | 280.3 × 198.3 × 36.0 ^(v2) ^(v3) |
| Mounting | VESA 75 ^(v2) ^(v3) |
| | 4x M3.5 screw thread |

| | |
|----------------------------------|---|
| Included in the Delivery | |
| Power Supply (see Power section) | Short Installation Manual |
| Plastic Screen Protector | VESA 75 back plate (attached to tablet) ^(v2) ^(v3) |
| Battery (inside) | |

| | |
|------------------|--|
| PC System | |
| CPU | Intel® Pentium® QuadCore N4200 |
| Graphic GPU | Intel® HD Graphics 505 |
| Audio | Realtek ALC3236 Audio CODEC |
| Memory | 6GB RAM |
| Storage | 128GB eMMC |
| Network | 1x Realtek PCIe GB LAN 8111G; Wi-Fi 802.11ax (see Wi-Fi specifications) |
| Bluetooth | Bluetooth 5.2 (high speed data transfer) |
| Microphone | Integrated (behind cover glass) |
| Preinstalled OS | Windows 10 IoT LTSC 2019 Entry (with license) ^(v3) |

| | | |
|-----------------------|---|--|
| Touch Panel | | |
| Touch Technology | Projected Capacitive 10-Point Multitouch | |
| Touch Connector | USB | |
| Touch Life (Contacts) | Unlimited | |
| Surface Hardness | 7H | |
| Surface Treatment | Anti-glare (chemical etching) | |
| Glass Strengthening | Chemically Strengthened | |
| Additional Coating | Kastus® 24/7 Antimicrobial Coating (3-in-1) | |
| Touch Firmware | Included | Works with fingers, gloves & in rainy conditions |
| | Download from website | Works with capacitive touch stylus |

| | | |
|---|--|---|
| Power | | |
| Power Indicator | Green / Red LED | |
| Built-in Battery | Rechargeable Lithium Battery, 7.4V/7000mAh ^(v2) ^(v3) | |
| Power Supply | 100-240V ACDC active switching; 12V DC-Out | |
| Working Power (V) | 12 | |
| Power Consumption / Active Working Time (w/o stand-by mode) | 25% brightness, idle mode (indoor / semi-indoor) | 6W / 8.6 hours minimum ^(v2) ^(v3) |
| | 50% brightness, 50% full usage (semi-indoor) | 10W / 5.2 hours minimum ^(v2) ^(v3) |
| | 100% brightness, 100% full usage (outdoor) | 15.5W / 3.3 hours minimum ^(v2) ^(v3) |
| Stand-By Consumption (W) | <1 | |

| | |
|---|--|
| External Connectors | |
| 1x 12V DC-In (to recharge) | 1x Micro HDMI 1.4 (class type D) |
| 1x USB 3.0 | 1x USB 2.0 |
| 1x Micro USB 2.0 | 1x Headphone port - Ear out only (3.5mm) |
| 1x 10/100/1000Mbit RJ45 Port | 1x COM port DSUB9 (RS232) |
| 1x Micro SD card slot (TF - TransFlash) | |

LED light indicator

1000 cd/m² brightness
(suitable for outdoor use)

Integrated microphone
(behind cover glass)

10-Finger-multi touch
capacitive touch panel

Anti-glare chemical etching with
anti-viral & anti-bacterial coating
(active for the entire product lifecycle)

Front camera

Rugged IP65 silicone
rubber frame

IP65 silicone
rubber covers

Front

Optically bonded touch
panel to LCD panel



Peripherals

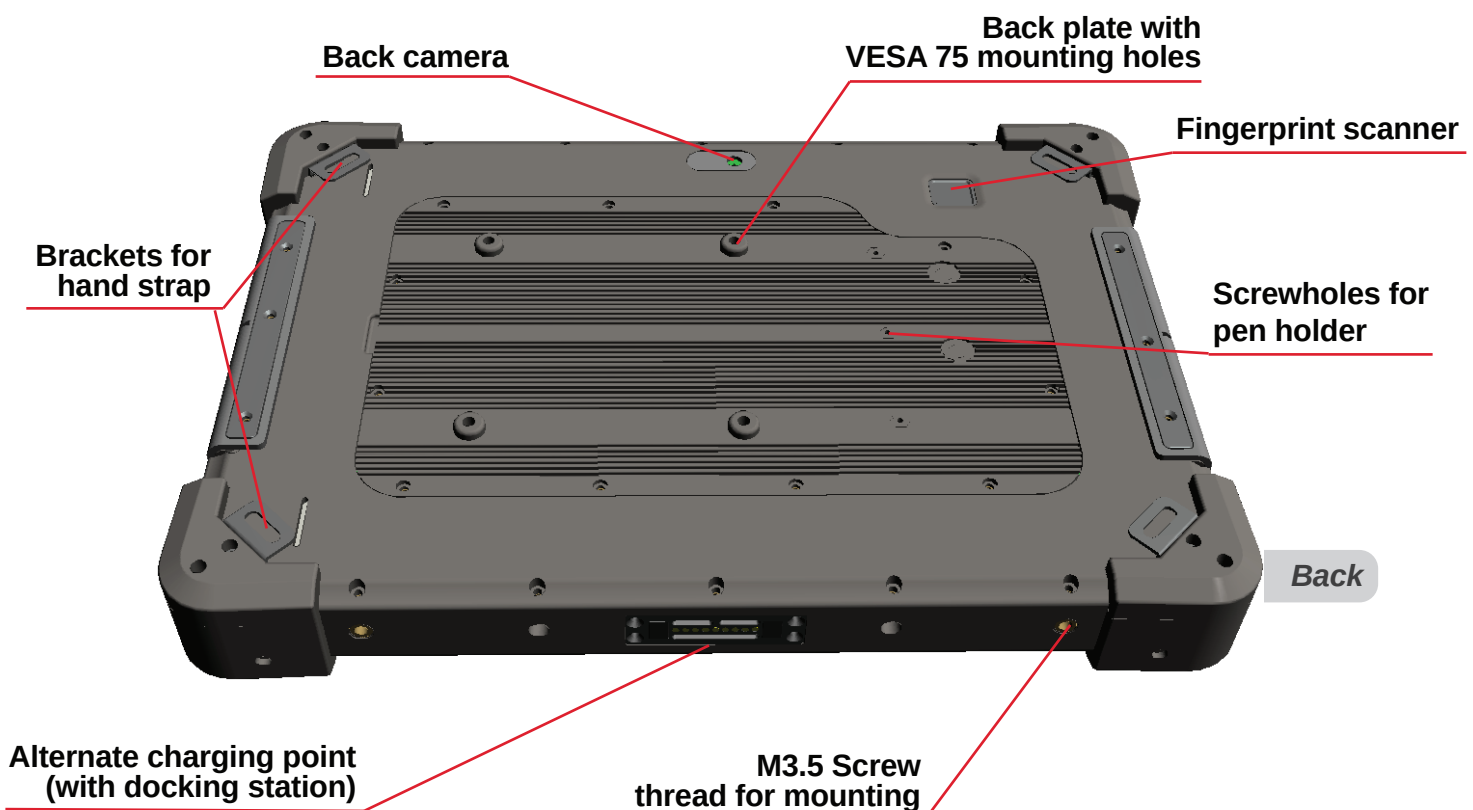
| Wi-Fi & Bluetooth Specifications (AX200) ^{(v2) (v3)} | |
|---|---|
| Product Name | Intel® Wi-Fi 6 AX200 Module |
| Wi-Fi | High-performance, low-power, dual-band Pre-Standard-802.11ax Dual Band 2x2 |
| Band Channels | 2.4GHz and 5GHz (2-160 MHz channels) |
| Wi-Fi Alliance certifications | 802.11a/b/g/n/ac(PreStandard), WPA/2 Personal and enterprise, WPS2, PMF, WMM, WMM-PS, WFD, Miracast, Passpoint R2, Voice Personal |
| Performance | TX Burst, TCP packet reordering, MSix for reduced multi-core CPU load upto MCS11 |
| Wi-Fi-Bluetooth Coex | MIMO TX/TX and Rx/Rx Concurrency |
| Bluetooth | Bluetooth 5.2 |

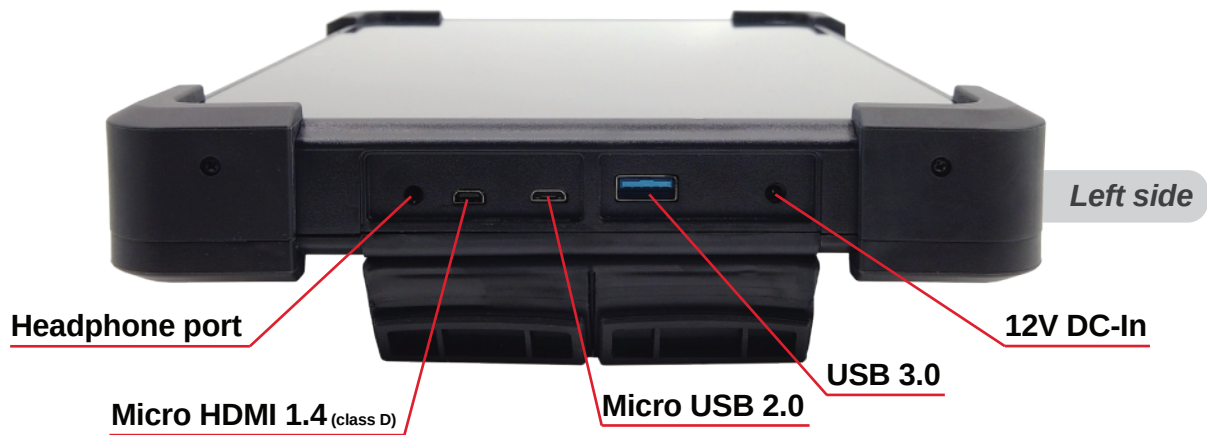
| Fingerprint Scanner Specifications (MB-X4) | |
|--|--|
| Purpose | Register & unlock device (Windows 10) |
| Pixels / resolution | 88×88px / 508 DPI |
| Storage capacity | 100 unique prints (multiple fingers & accounts) |
| Unlocking time | <1s |
| FRR / FAR | <2% / <0.002% |
| Communication interface / UART | SPI / 57600 |
| Additional features | build-in "Smart Learning" algorithm, allowing fingerprint matching to be faster over time Accepts 360° (degrees) fingerprint matching |

| OPTIONAL (not included in standard version) GPS Specifications (UB-118) | |
|---|--|
| Product Name | UB-118 |
| Chipset | High performance BD2/GPS chipset |
| Frequency | GPS L1 1575.42 MHz / BD B11561.098MHz |
| Power Consumption | 100mW |
| TTFF (Time to first fix) | Hot start: 1s Cold start: 32s |
| Accuracy (position) | Autonomous <2.5m RMS DGNSS <1m RMS |
| Accuracy (velocity) | GPS(+BDS) 0.1m/s RMS BDS 0.2m/s RMS |
| Accuracy (time) | 100ns |
| Sensitivity (acquisition) | BDS -145dBm GPS -147dBm |
| Sensitivity (tracking) | BDS -160dBm GPS -162dBm |
| Protocol | NMEA 0183 (compatible with BDS) |
| Maximum altitude | < 50,000 meter |
| Maximum velocity | < 500 m/s |
| Maximum acceleration | < 4G |

| Barcode Scanner Specifications (N4680) ^(v2) | | |
|--|--|-----------------------------|
| Product Name | Honeywell N4680 Decoded 2D Scan Engine | |
| Sensor | 640×480 CMOS, 60 frames per second | |
| Illumination Wavelength | Warm white IED with CCT 3000K | |
| Aiming Wavelength | 630nm Red LED | |
| Scan Angle | Roll: 360°, Pitch: ±50°, Skew: ±50° | |
| Field of View | Horizontal ±20°, Vertical ±15° | |
| Motion Tolerance | 6 m/s | |
| Maximum image capture rate | 120 frames per second | |
| Supported Symbolologies | 1D, 2D barcodes, OCR, Poorly printed & on-screen bar codes | |
| Typical Depth of Field | C39 | 36mm - 747mm (5-10-20 mils) |
| | 100% UPC-A | 46mm - 390mm (13 mils) |
| | C128 | 33mm - 598mm (5-10-20 mils) |
| | PDF417 | 42mm - 490mm (7-10-20 mils) |
| | QR-Code | 40mm - 367mm (7-20 mils) |
| | Data Matrix | 40mm - 182mm (10 mils) |

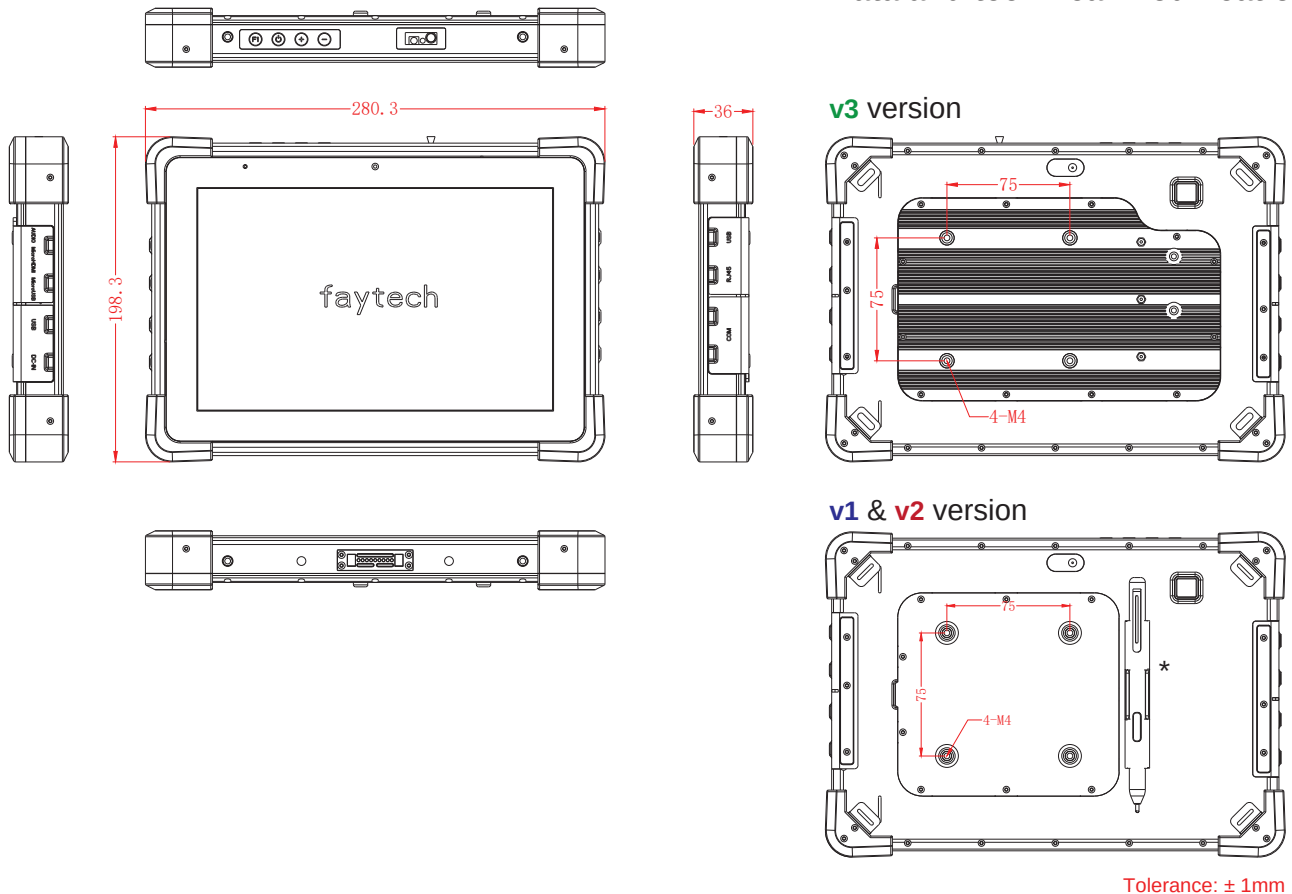
| Camera Specifications (front & back) ^(v2) | | |
|--|---|---------------|
| Camera | Front (screen side) | Back |
| Pixels | 2MP (200W) | 5MP (500W) |
| Pixel Size | 1.75*1.75um | 1.4*1.4um |
| Image Resolution | 1600×1200 | 2592×1944 |
| Image Transfer Rate | 30 frames/sec | 15 frames/sec |
| Lens Size | 1/5 inch | 1/4 inch |
| Optical Field of View | 60° | 73° |
| Glass finish (in front of lens) | Polished glass | |
| Output Formats | RAW RGB, RGB 565/555/444, CCIR656 YUV422/420, YCbCr422, and compression | |





Drawing

Errata and technical modifications reserved



* Capacitive Touch Stylus & Holder not included in standard version (for reference only)

Revision History

Update Notes:

Version:

Changes:

- | | |
|-----------|---|
| v3 | - back-plate re-design for better heat management Windows 10 pre-installed with license activated |
| v2 | - Increased the brightness from ' 500+ cd/m² ' to ' 1000 cd/m² ' Increased the lithium battery size from ' 6000mAh ' to ' 7000mAh ' Included ' VESA 75 back plate ' as standard Increased the cover glass thickness from ' 1.1mm ' to ' 1.8mm ', for more impact resistance Updated the silicone rubber frame design, to increase the ruggedness of the tablet Updated the barcode scanner from ' LV 3296 OEM ' to ' Honeywell N4680 ' scan engine Updated the Wi-Fi & Bluetooth module from ' 6221-PUC ' to ' Intel® Wi-Fi 6 AX200 ' Updated the front & back camera module (minor modifications) Added screwholes on the back for capacitive touch stylus holder |
| v1 | - First version |

Global Headquarters

Pyramid Computer GmbH | Bötzingen Straße 60 D-79111 | Freiburg, Germany | www.pyramid-computer.com | +49 761 4514 0 | sales@pyramid.de

APAC Headquarters

faytech Tech. Co., Ltd. | Fl. 2, Bldg. 8, Winlead Intelligent Park | Shenzhen, China | www.faytech.com | +86 755 89580612 | sales@faytech.com

USA Office

faytech North America | 237-239 West 29th Street, Ground Floor NY 10001 | New York, USA | www.faytech.us | +1 646 843 0877 | sales@faytech.us

Japan Office

faytech Inc. | 6th floor CI building 1-7-11, Higashinohonbashi, Chuoku | Tokyo, Japan | www.faytech.com | +81 3 5809 3937 | sales@faytech.jp

India Office

Faytech Private Limited | 3/16 Shanti Niketan, 110021 | New Delhi, India | www.faytech.com | +91 11 49707436 | sales@faytech.co.in

South-Korea Office

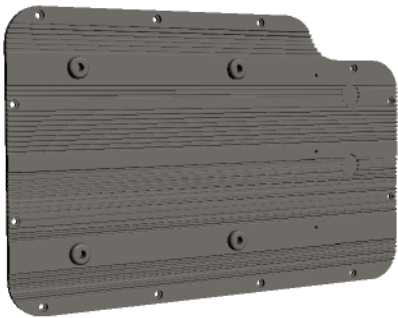
Deutsche Faytech Korea | #501, GBSA, 107 Gwanggyoro, Yeongong-gu, Suwon-si, 16229 | Gyeonggi-do, Republic of Korea | www.faytech.kr | +82 10 3479 1815 | sales@faytech.kr

Included Accessories

VESA 75 back plate (attached to tablet)

| Product name | | | | VESA 75 back plate | | | |
|---------------------|-----------------------|----------------------|---------|---------------------|-----------------------|----------------------|---------|
| EAN number | | | | N/A | | | |
| Global Article Code | European Article Code | Release date (D/M/Y) | Version | Global Article Code | European Article Code | Release date (D/M/Y) | Version |
| - | - | 23/07/2023 | V1 | | | | |
| | | | | | | | |

- VESA 75 holes for solid mounting
- Complete black PC-ABS back-plate
- Screw holes for capacitive touch stylus holder
- Ripples for heat management



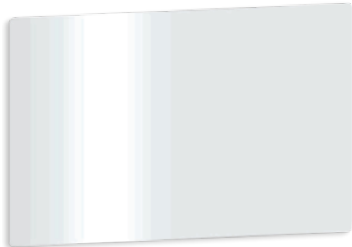
Battery (inside)



Power Supply



Plastic Screen Protector



Optional Accessories

Standard Tablet Docking Station

| Product name | | | | Tablet Docking Station | | | |
|---------------------|-----------------------|----------------------|---------|------------------------|-----------------------|----------------------|---------|
| EAN number | | | | N/A | | | |
| Global Article Code | European Article Code | Release date (D/M/Y) | Version | Global Article Code | European Article Code | Release date (D/M/Y) | Version |
| 3030509073 | 1010502266 | 01/10/2021 | v1 | | | | |



- Easy 9-pin holder, to charge industrial tablet
- DC-In interface with Input voltage 12V/2.4A (power supply included)
- 4 USB 2.0 ports connected to the tablet directly when mounted
- Reliable plastic case, easy to handle and mount

Capacitive Touch Stylus

| Product name | | | | Capacitive Touch Stylus | | | |
|---------------------------|-----------------------|----------------------|---------|-----------------------------|-----------------------|----------------------|---------|
| Model number / EAN number | | | | FTCAPSTYLUS / 6920734091065 | | | |
| Global Article Code | European Article Code | Release date (D/M/Y) | Version | Global Article Code | European Article Code | Release date (D/M/Y) | Version |
| 20205003213 | 1010501169 | 01/11/2020 | v1 | | | | |



- Easy-to-use capacitive touch stylus
- Perfect accessory for the faytech flat
- Light and durable aluminum housing
- Requires different touch firmware for tablet, download from www.faytech.com/downloads/ or contact your sales representative

Capacitive Touch Stylus Holder

| Product name | | | | Capacitive Touch Stylus Holder | | | |
|---------------------|-----------------------|----------------------|---------|--------------------------------|-----------------------|----------------------|---------|
| EAN number | | | | N/A | | | |
| Global Article Code | European Article Code | Release date (D/M/Y) | Version | Global Article Code | European Article Code | Release date (D/M/Y) | Version |
| 3030509850 | - | 01/03/2022 | v1 | | | | |



- Holder for clicking Capacitive Touch Stylus to back of tablet
- High quality black TPU plastic holder
- Iron connection plate for solid mounting
- Includes 3 black-coated stainless steel screws (KM2*5)

Hand Strap

| Product name | | | | Hand Strap | | | |
|---------------------|-----------------------|----------------------|---------|---------------------|-----------------------|----------------------|---------|
| EAN number | | | | N/A | | | |
| Global Article Code | European Article Code | Release date (D/M/Y) | Version | Global Article Code | European Article Code | Release date (D/M/Y) | Version |
| 3030509327 | 1010502267 | 01/10/2021 | v1 | | | | |



- Black leather hand holder with straps
- Comfortable, light-weight & easy to hold
- Easily mountable using the tablet corner brackets